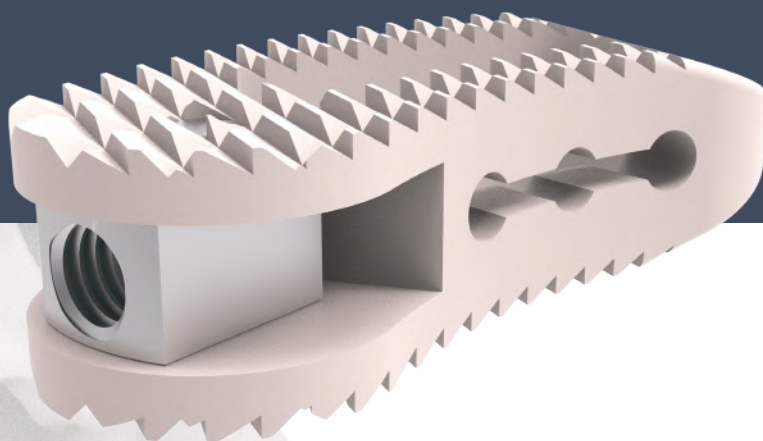


SURGICAL TECHNIQUE



Twisty

TLIF peek cage



Twisty TLIF peek cage

TABLE OF CONTENTS

INTRODUCTION	2-3
SURGICAL TECHNIQUE	4-9
SIZES OF IMPLANTS	10
INSTRUMENT CONTAINER	11
INSTRUMENT TYPES	12-13
CONTACT	14

Twisty TLIF peek cage

INTRODUCTION



Twisty Features

- The cage and the holder are initially lined up to facilitate entry
- The wedge like profile makes the cage insertion process a straight forward and easy task
- The biocompatibility and mechanical properties are perfectly suited for interbody applications
- The cage is moved to its final location with minimal effort with movable titanium part
- Allow for a higher volume of bone grafting material resulting in good fusion
- Tantalum marker

Twisty TLIF peek cage

INTRODUCTION



Indications

Indications are lumbar and lumbosacral pathologies in which segmental spondylodesis is indicated, for example:

- Degenerative disc diseases and spinal instabilities
- Revision procedures for post-discectomy syndrome
- Pseudarthrosis or failed spondylodesis
- Degenerative spondylolisthesis
- Isthmic spondylolisthesis

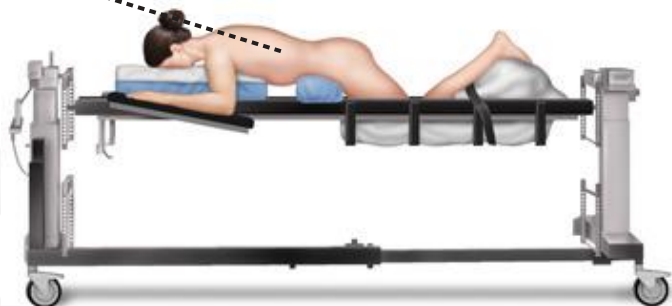
Contraindications

- Vertebral body fractures
- Spinal tumors
- Major spinal instabilities
- Primary spinal deformities

ACCESS AND EXPOSURE



Position the patient in a restored physiological lordosis.



Twisty TLIF peek cage

SURGICAL TECHNIQUE

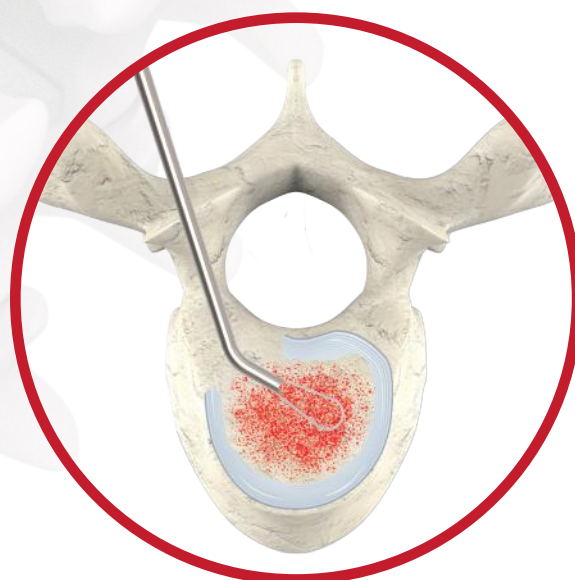
1

TLIF Site Preparation



Angled curettes can be used to complete the resection in areas of reduced access or to clear an area for additional bone graft insertion.

Figure 1a



Straight Curette

Left Curette

Right Curette

Rasp



Straight Curette (NMBC003), Left Curette (NMBC004), Right Curette (NMBC00), Rasp (NMBC012)

Twisty TLIF peek cage

SURGICAL TECHNIQUE

2

Determine Implant Size



Figure 2a

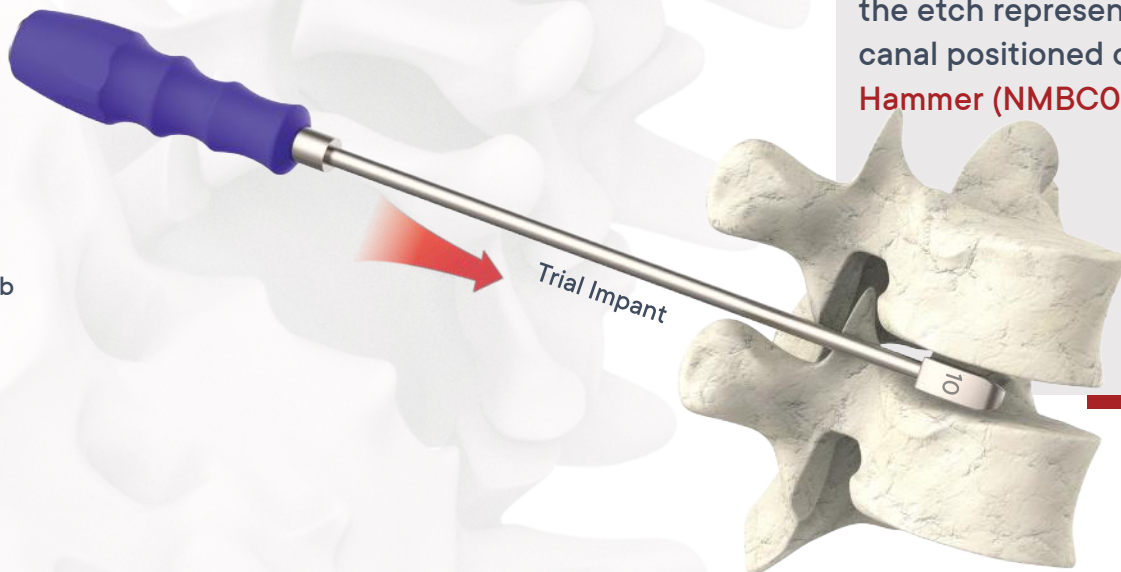


Figure 2b



Impact an appropriately sized **Trial Implant (NMBC009)** with the etch representing the axial canal positioned cranial/caudal. **Hammer (NMBC013)**

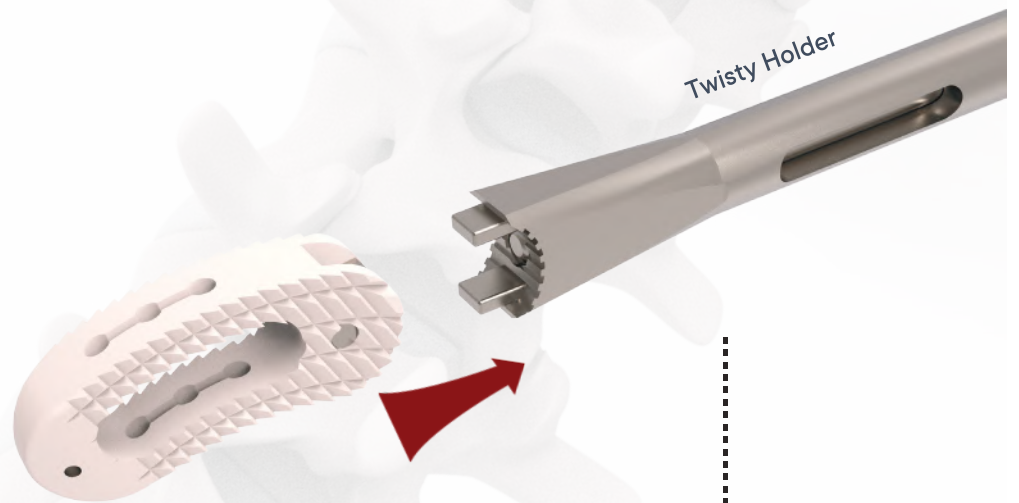
Twisty TLIF peek cage

SURGICAL TECHNIQUE

3

Implant Insertion

Figure 3a



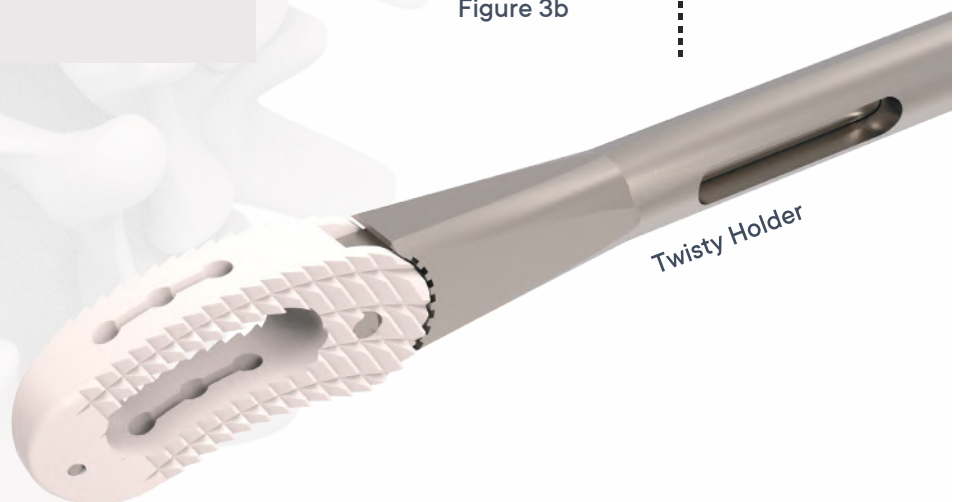
Twisty Holder

These parts allow easy grip of the implant.

Twisty Holder (NMBC001)



Figure 3b



Twisty Holder

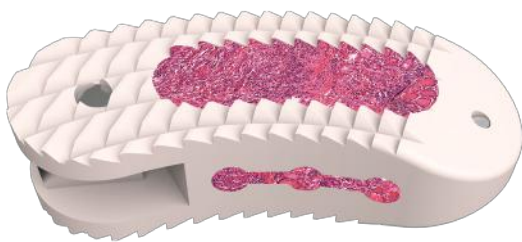
Twisty TLIF peek cage

SURGICAL TECHNIQUE

3

Implant Insertion

Figure 3c



These systems are offered in multiple sizes and lordotic angles, with a central opening that allows for increased graft volume.

STEP 1

Figure 3d



Be sure to fix it firmly



One or one and a half turn on clockwise to fix the implant.
Twisty Holder (NMBC001)

Twisty TLIF peek cage

SURGICAL TECHNIQUE

3

Implant Insertion

STEP 2

Figure 3e



Insert the implant vigorously



STEP 3

Figure 3f



Turn one or a half turn counter-clockwise to loosen the implant

Twisty TLIF peek cage

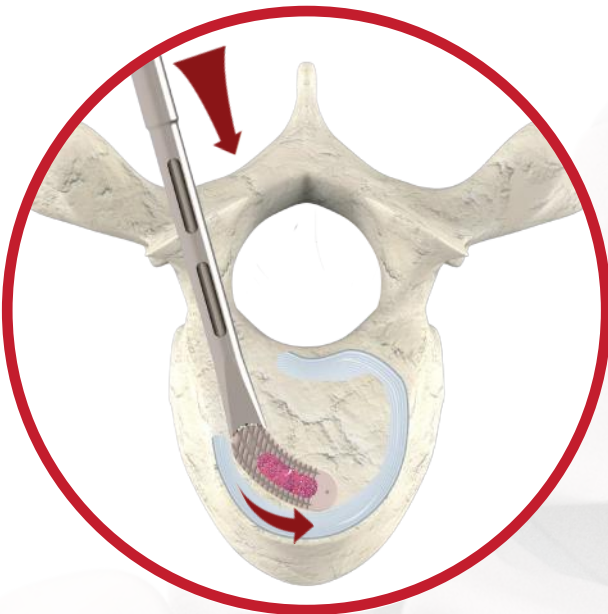
SURGICAL TECHNIQUE

3

Implant Insertion

STEP 4

Figure 3g



Continue to impact gently and progressively into the disc space until the implant reaches desired positioning



At this position, the implant is designed to rotate on the rail as the leading edge contacts the ventral annulus

NOTE:



When deemed medically necessary, for intraoperative rescue, use a Twisty Holder to remove

Twisty TLIF peek cage

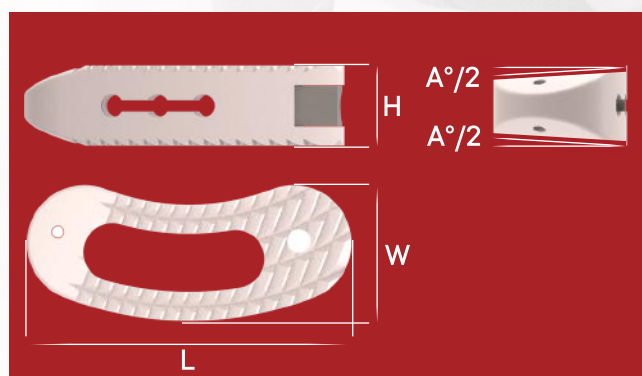
SIZES OF IMPLANTS

TWISTY TLIF PEEK CAGE

Catalogue No.	Width	Length	Height
NMBC2407	10 mm	24 mm	7 mm
NMBC2408	10 mm	24 mm	8 mm
NMBC2409	10 mm	24 mm	9 mm
NMBC2410	10 mm	24 mm	10 mm
NMBC2411	10 mm	24 mm	11 mm
NMBC2412	10 mm	24 mm	12 mm
NMBC2413	10 mm	24 mm	13 mm
NMBC2807	10 mm	28 mm	7 mm
NMBC2808	10 mm	28 mm	8 mm
NMBC2809	10 mm	28 mm	9 mm
NMBC2810	10 mm	28 mm	10 mm
NMBC2811	10 mm	28 mm	11 mm
NMBC2812	10 mm	28 mm	12 mm
NMBC2813	10 mm	28 mm	13 mm
NMBC3207	10 mm	32 mm	7 mm
NMBC3208	10 mm	32 mm	8 mm
NMBC3209	10 mm	32 mm	9 mm
NMBC3210	10 mm	32 mm	10 mm
NMBC3211	10 mm	32 mm	11 mm
NMBC3212	10 mm	32 mm	12 mm
NMBC3213	10 mm	32 mm	13 mm

TWISTY TLIF PEEK CAGE ANGLED

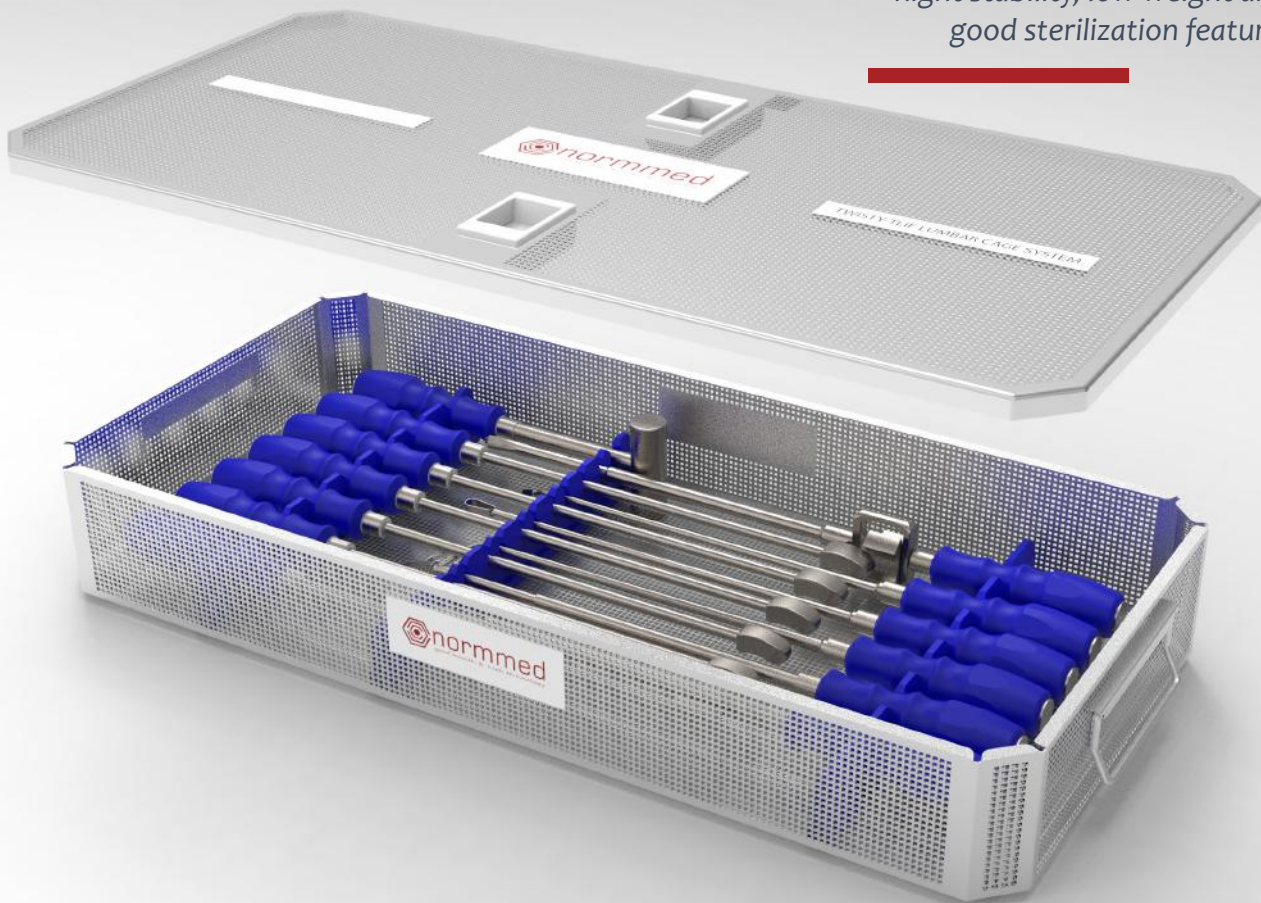
Catalogue No.	Width	Length	Height	Angle
NMBCA24074	10mm	24 mm	7 mm	4°
NMBCA24084	10mm	24 mm	8 mm	4°
NMBCA24094	10mm	24 mm	9 mm	4°
NMBCA24104	10mm	24 mm	10 mm	4°
NMBCA24114	10mm	24 mm	11 mm	4°
NMBCA24124	10mm	24 mm	12 mm	4°
NMBCA24134	10mm	24 mm	13 mm	4°
NMBCA24088	10mm	24 mm	8 mm	8°
NMBCA24098	10mm	24 mm	9 mm	8°
NMBCA24108	10mm	24 mm	10 mm	8°
NMBCA24118	10mm	24 mm	11 mm	8°
NMBCA24128	10mm	24 mm	12 mm	8°
NMBCA24138	10mm	24 mm	13 mm	8°
NMBCA28074	10mm	28 mm	7 mm	4°
NMBCA28084	10mm	28 mm	8 mm	4°
NMBCA28094	10mm	28 mm	9 mm	4°
NMBCA28104	10mm	28 mm	10 mm	4°
NMBCA28114	10mm	28 mm	11 mm	4°
NMBCA28124	10mm	28 mm	12 mm	4°
NMBCA28134	10mm	28 mm	13 mm	4°
NMBCA28088	10mm	28 mm	8 mm	8°
NMBCA28098	10mm	28 mm	9 mm	8°
NMBCA28108	10mm	28 mm	10 mm	8°
NMBCA28118	10mm	28 mm	11 mm	8°
NMBCA28128	10mm	28 mm	12 mm	8°
NMBCA28138	10mm	28 mm	13 mm	8°
NMBCA32074	10mm	32 mm	7 mm	4°
NMBCA32084	10mm	32 mm	8 mm	4°
NMBCA32094	10mm	32 mm	9 mm	4°
NMBCA32104	10mm	32 mm	10 mm	4°
NMBCA32114	10mm	32 mm	11 mm	4°
NMBCA32124	10mm	32 mm	12 mm	4°
NMBCA32134	10mm	32 mm	13 mm	4°
NMBCA32088	10mm	32 mm	8 mm	8°
NMBCA32098	10mm	32 mm	9 mm	8°
NMBCA32108	10mm	32 mm	10mm	8°
NMBCA32118	10mm	32 mm	11 mm	8°
NMBCA32128	10mm	32 mm	12 mm	8°
NMBCA32138	10mm	32 mm	13 mm	8°



Twisty TLIF peek cage INSTRUMENT CONTAINER



This container is made of wiremesh stainless steel. It has a high stability, low weight and good sterilization feature.



Container

Twisty TLIF peek cage

INSTRUMENT TYPES



Set No.	Catalogue No.	Description	Piece
01	NMBC013	Hammer	1
02	NMBC011	Trial 12 mm	1
03	NMBC010	Trial 11 mm	1

Twisty TLIF peek cage

INSTRUMENT TYPES

	Set No.	Catalogue No.	Description	Piece
	04	NMBC009	Trial 10 mm	1
	05	NMBC008	Trial 9 mm	1
	06	NMBC007	Trial 8 mm	1
	07	NMBC006	Trial 7 mm	1
	08	NMBC001	Holder	1
	09	NMBC004	Left Currete	1
	10	NMBC003	Straight Currete	1
	11	NMBC005	Right Currete	1
	12	NMBC012	Rasp	1
	13	NMBC002	Pusher	1

Twisty TLIF peek cage

CONTACT



NORMMED MEDICAL AND MACHINERY
INDUSTRY TRADE LIMITED COMPANY



İvedik O.S.B. 1468 Cad. No : 193
Yenimahalle/ANKARA



+90 312 395 61 84



info@normmed.com.tr

No: F12-CT-21, Release Date: 12.07.2019
Revision Date: 16.04.2021, Revision No: 02

Twisty Surgical Technique Normmed

14