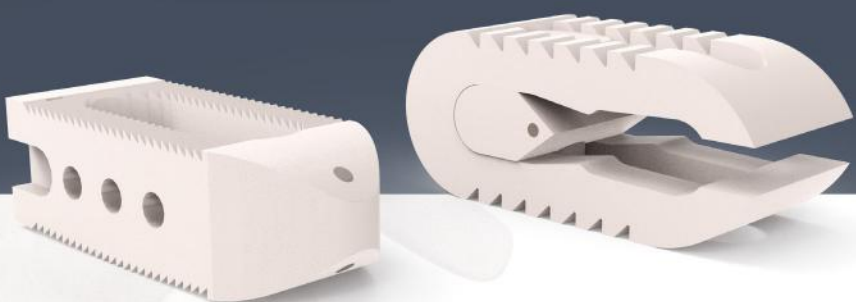


# SURGICAL TECHNIQUE



Alligator

Alligator-*exp*

PLIF peek cage

# Alligator

# Alligator-exp

PLIF peek cage

## TABLE OF CONTENTS

<b>INTRODUCTION</b>	<b>2-3</b>
<b>SURGICAL TECHNIQUE</b>	<b>4-13</b>
<b>SIZES OF IMPLANTS</b>	<b>14</b>
<b>INSTRUMENT CONTAINER</b>	<b>15-16</b>
<b>INSTRUMENT TYPES</b>	<b>17-18</b>
<b>CONTACT</b>	<b>19</b>

# Alligator Alligator-exp

PLIF peek cage

## INTRODUCTION



### Alligator Features

- Tantalum marker
- Bulleted anterior profile facilitates cage insertion into the intervertebral space
- Open design of the upper and lower surfaces allows optimum graft surface to improve bone fusion
- Retaining teeth and biconvex profile prevent migration
- Revolutionary instrumentation to ensure safety and efficiency during posterior lumbar

### Alligator-exp Features

- Don't allow any lesional problems
- Implanted from posterior approach for following indications; Mechanical instability, Spondylolisthesis
- Threaded surface feature facilitates a strong fixation by superior and inferior area
- Height can be increased by 1 mm at least

# Alligator

## Alligator-exp

PLIF peek cage

## INTRODUCTION



### Indications

*Indications are lumbar and lumbosacral pathologies in which segmental spondylodesis is indicated, for example:*

- *Degenerative disc diseases and spinal instabilities*
- *Revision procedures for post-discectomy syndrome*
- *Pseudarthrosis or failed spondylodesis*
- *Degenerative spondylolisthesis*
- *Isthmic spondylolisthesis*

### Contraindications

- *Vertebral body fractures*
- *Spinal tumors*
- *Major spinal instabilities*
- *Primary spinal deformities*

# Alligator Alligator-exp

PLIF peek cage

## SURGICAL TECHNIQUE

1

### Patient positioning

Position the patient in a restored physiological lordosis.



Figure 1a

2

### Exposure

The PLIF approach can be performed using standard open or minimally invasive techniques. The laminae and articular processes are exposed laterally to the base of the transverse processes.



Figure 2a

# Alligator Alligator-exp

PLIF peek cage

## SURGICAL TECHNIQUE

3

PLIF Site Preparation



**Lumbar Reamer (LPC008)** can be used to complete the resection in areas of reduced access or to clear an area for additional bone graft insertion.



Figure 3a



Figure 3b

Alligator  
Alligator-exp Surgical Technique Norm

# Alligator Alligator-exp

PLIF peek cage

## SURGICAL TECHNIQUE

3

Determine Implant Size



Impact an appropriately sized **Trial Implant** with the etch representing the axial canal positioned cranial/caudal. **Hammer (LPC009)**



**Trial 7 mm (LPC002), Trial 8 mm (LPC003), Trial 9 mm (LPC004), Trial 10 mm (LPC005), Trial 11 mm (LPC006), Trial 12 mm (LPC007)**

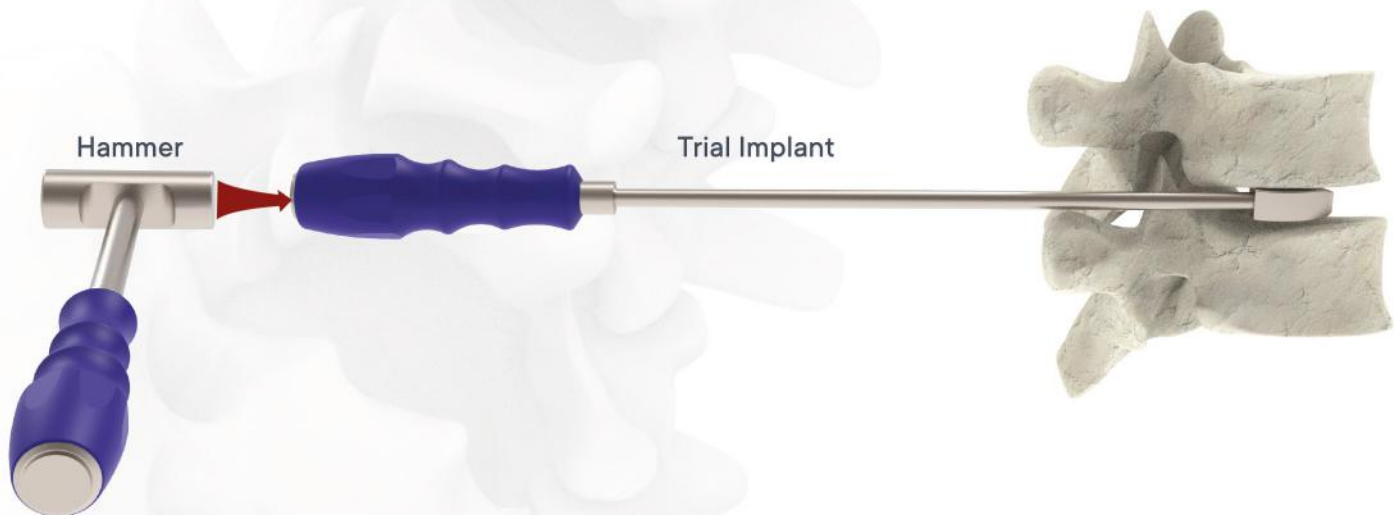


Figure 4a

Alligator  
Alligator-exp Surgical Technique Norm

# Alligator

PLIF peek cage

## SURGICAL TECHNIQUE

4a

Implant Insertion



Figure 4a.a

These parts allow easy grip of the implant. **Alligator Holder (LPC001)**



Figure 4a.b



# Alligator

PLIF peek cage

## SURGICAL TECHNIQUE

4a

Implant Insertion



These systems are offered in multiple sizes and lordotic angles, with a central opening that allows for increased graft volume. **Alligator Holder (LPC001)**, **Hammer (LPC009)**



Figure 4a.c



Figure 4a.d

Alligator  
Alligator-exp Surgical Technique Norm

# Alligator

PLIF peek cage

## SURGICAL TECHNIQUE

4a

Implant Insertion



Once inserted, the posterior end of the cage should lie between 2mm-4mm anterior to the posterior vertebral body wall. **Alligator Holder (LPC001)** is then release. (Figure 4a.e)



Figure 4a.e

Alligator  
Alligator-exp Surgical Technique Norm

# Alligator-exp

PLIF peek cage

## SURGICAL TECHNIQUE

4b

Implant Insertion



Figure 4b.a



Figure 4b.b

**Step 1:** Alligator-Exp is fixed at the end of Alligator-Exp Holder (ELPC001). (Figure 4b.a)

**Step 2:** Alligator-Exp placed between vertebrae. (Figure 4b.b)  
Hammer (LPC009)

# Alligator-exp

PLIF peek cage

## SURGICAL TECHNIQUE

4b

Implant Insertion



Figure 4b.c



Figure 4b.d



**Step 3:** After insertion, the rear part is turned clockwise and the part is moved forward. **Alligator-Exp Holder (ELPC001)** (Figure 4b.e)



Figure 4b.e



Alligator

Alligator-exp Surgical Technique Norm

# Alligator-exp

PLIF peek cage

## SURGICAL TECHNIQUE

4b

Implant Insertion Preparation



Once inserted, the posterior end of the cage should lie between 2mm-4mm anterior to the posterior vertebral body wall. **Alligator-Exp Holder (ELPC001)** is then unscrewed. (Figure 4a.e)



Figure 4b.f

# Alligator-exp

PLIF peek cage

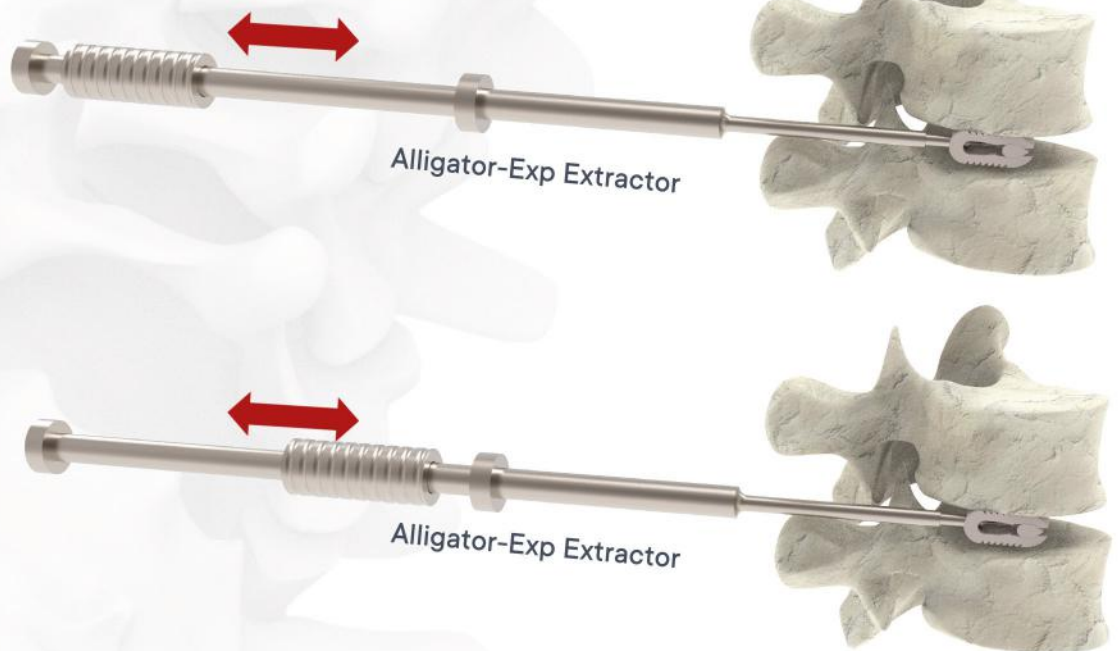
## SURGICAL TECHNIQUE

5

Removal



For removal step, **Alligator-Exp Extractor (ELPC002)** is placed behind **Alligator-Exp** implant. Retracts by sliding impact. (Figure 5a)



# Alligator Alligator-exp

PLIF peek cage

## SIZES OF IMPLANTS

### Alligator PLIF peek cage

Catalogue No.	Width	Length	Height
NVPCD2206	10 mm	22 mm	6 mm
NVPCD2207	10 mm	22 mm	7 mm
NVPCD2208	10 mm	22 mm	8 mm
NVPCD2209	10 mm	22 mm	9 mm
NVPCD2210	10 mm	22 mm	10 mm
NVPCD2211	10 mm	22 mm	11 mm
NVPCD2212	10 mm	22 mm	12 mm
NVPCD2406	10 mm	24 mm	6 mm
NVPCD2407	10 mm	24 mm	7 mm
NVPCD2408	10 mm	24 mm	8 mm
NVPCD2409	10 mm	24 mm	9 mm
NVPCD2410	10 mm	24 mm	10 mm
NVPCD2411	10 mm	24 mm	11 mm
NVPCD2412	10 mm	24 mm	12 mm

H



W



L

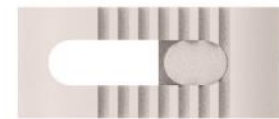
### Alligator-exp PLIF expandable peek cage

Catalogue No.	Width	Length	Height
NEPC1007	10 mm	24 mm	7 mm
NEPC1008	10 mm	24 mm	8 mm
NEPC1009	10 mm	24 mm	9 mm
NEPC1010	10 mm	24 mm	10 mm
NEPC1011	10 mm	24 mm	11 mm
NEPC1012	10 mm	24 mm	12 mm

H



W



L

Alligator  
Alligator-exp Surgical Technique Norm

# Alligator

# Alligator-exp

PLIF peek cage

## INSTRUMENT CONTAINER



This container is made of wiremesh stainless steel. It has a high stability, low weight and good sterilization feature.



Container



# Alligator

# Alligator-exp

PLIF peek cage

## INSTRUMENT CONTAINER



This container is made of wiremesh stainless steel. It has a high stability, low weight and good sterilization feature.



Container

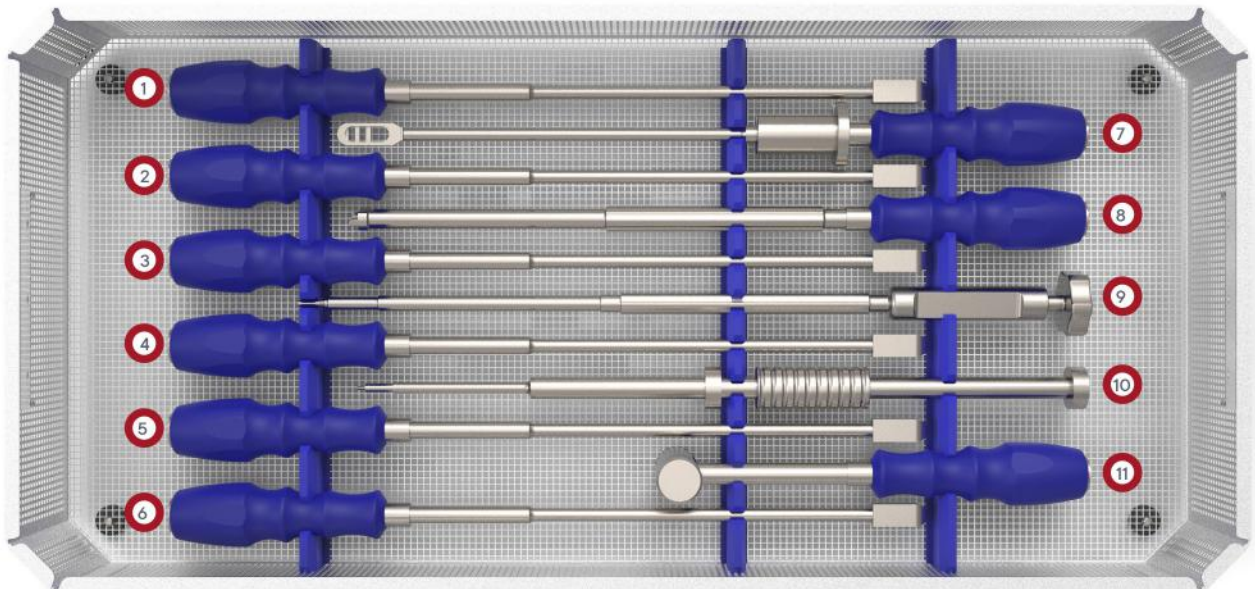
Alligator

Alligator-exp Surgical Technique Norm

# Alligator Alligator-exp

PLIF peek cage

## INSTRUMENT TYPES



Set No.	Catalogue No.	Description	Piece
01	LPC002	7 mm Trial	1
02	LPC003	8 mm Trial	1
03	LPC004	9 mm Trial	1

Alligator  
Alligator-exp Surgical Technique Norm

# Alligator Alligator-exp

PLIF peek cage

## INSTRUMENT TYPES

	Set No.	Catalogue No.	Description	Piece
	04	LPC005	10 mm Trial	1
	05	LPC006	11 mm Trial	1
	06	LPC007	12 mm Trial	1
	07	LPC008	Lumbar Reamer	1
	08	LPC001	Alligator Holder	1
	09	ELPC001	Alligator-Exp Holder	1
	10	ELPC002	Alligator-Exp Extractor	1
	11	LPC009	Hammer	1

# Alligatör

## Alligatör-exp

PLIF peek cage

### CONTACT



#### Norm Medical Devices Co. Ltd.



İvedik O.S.B. 1468 Cad. No : 193  
Yenimahalle/ANKARA



+90 (312) 284 00 80



info@normltd.net

No: NORM-F12-CT-11, Release Date: 27.03.2020  
Revision Date: -, Revision No: 00

Alligatör  
Alligatör-exp Surgical Technique Norm